

The academic hub for
research, teaching, study and networking
in Germany's vibrant Ruhr area



Forming technology

Tetraeder lookout at IBA Emscherpark, Bottrop



Welcome.

Innovation and partnership are guiding principles for the Ruhr area's remarkable transition from a coal and steel powerhouse to Germany's most cutting-edge science region.

As a driving force behind this transformation, the University Alliance Ruhr embodies this regional spirit through excellence in research and the collaboration of its members: the Ruhr University Bochum, TU Dortmund University and the University of Duisburg-Essen. These universities partner with renowned institutes and companies to shape the new identity of the Ruhr area as Germany's biggest academic hub with a global reach.

Our liaison office in New York serves as a gateway to the

Ruhr area's exciting innovation landscape.

Drawing on our extensive network of technology centers, educational institutions and international organizations, we bring together experts from both sides of the Atlantic who do groundbreaking work in our alliance's key areas of research: energy, materials sciences, logistics, health sciences, and the humanities. We connect scientists, scholars and students by hosting conferences and public events, creating networking opportunities and serving as an information platform.

Become part of the UA Ruhr network!

Peter Rosenbaum

Our team.



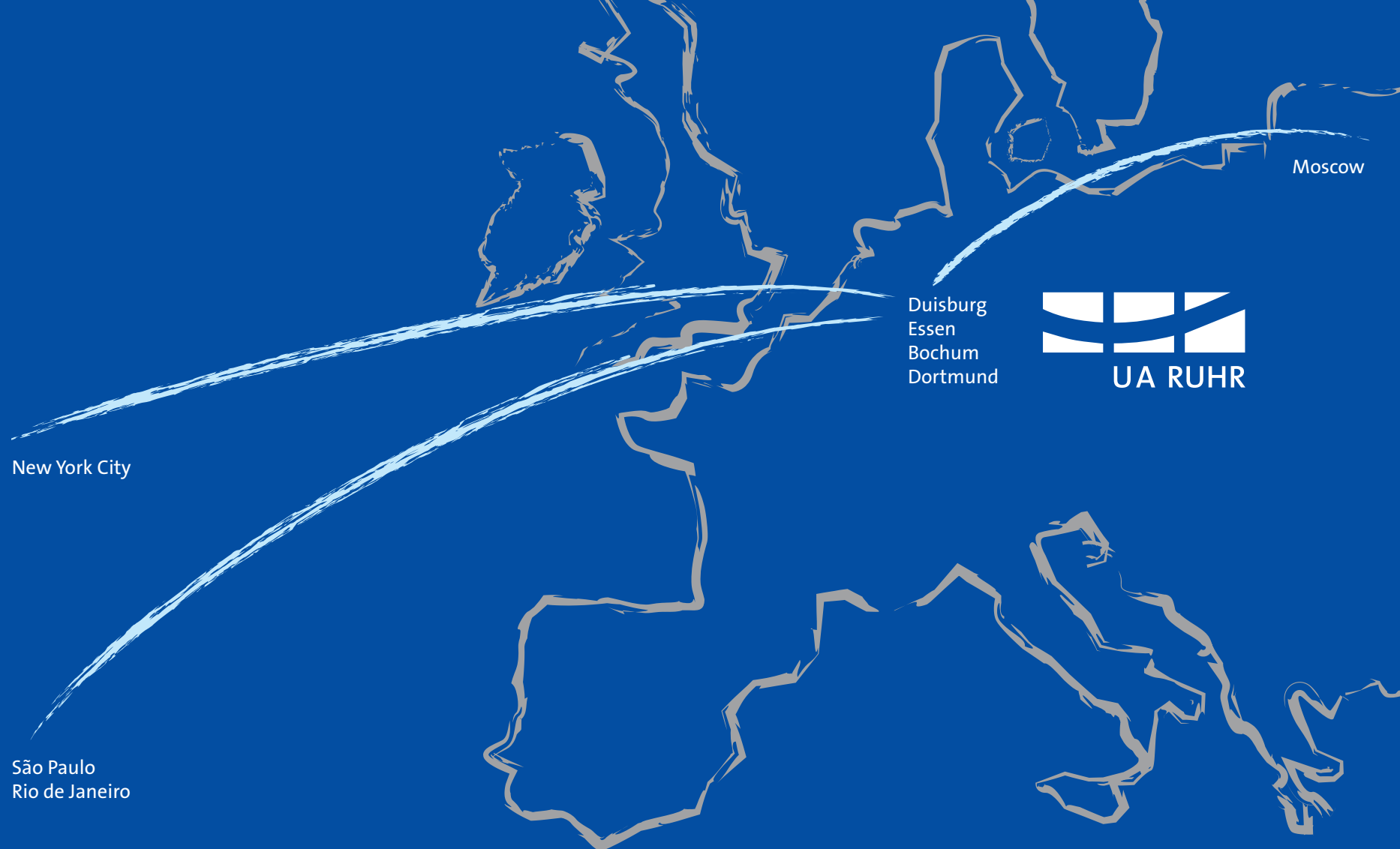
Peter Rosenbaum
UA Ruhr New York
Executive Director



Prof. Dr.
Gerhard Schembecker
UA Ruhr New York
President



Dr.
Barbara Schneider
UA Ruhr New York
Coordinator



What is the University Alliance Ruhr?

The UA Ruhr is a consortium of the Ruhr University Bochum, TU Dortmund University and the University of Duisburg-Essen, the three academic powerhouses of Germany's thriving Ruhr area, the *Ruhrgebiet* in German.

Each of our institutions has a strong tradition of breaking down walls between disciplines. We believe in collaboration on all levels of scholarship and research, which is one of the reasons we came together to form this unique university alliance.

Conversely, the UA Ruhr universities cooperate with hundreds of universities and institutions around the world.

To support and deepen our international exchange and collaboration, the UA Ruhr has liaison offices in North America (New York), Latin America (São Paulo and Rio de Janeiro), and Russia (Moscow).

Today, the *Ruhrgebiet* is not only Germany's largest academic hub, but also an epicenter of innovation that fosters close interaction between academia and the private sector. Our alliance is an open channel for students and researchers from around the world.

Fast facts

- 3 universities located within 20 minutes of one another
- 110,000 students
- 15,000 international students
- 17,000 faculty and academic staff
- €1.2b annual budget
- €300m in grant awards
- 800 partnerships in 130 countries
- 3 Max Planck Institutes (associated)
- 4 Fraunhofer Institutes (associated)
- 4 Leibniz Research Centers (associated)



© TU Dortmund University



© University of Duisburg-Essen



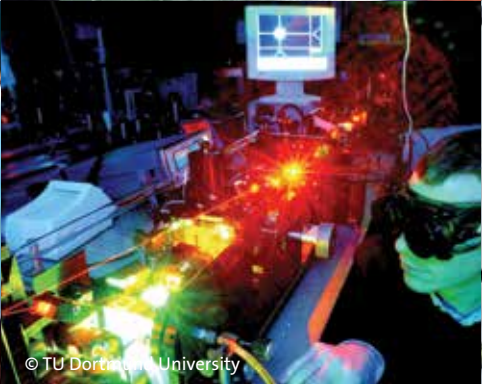
© Ruhr University Bochum



© TU Dortmund University



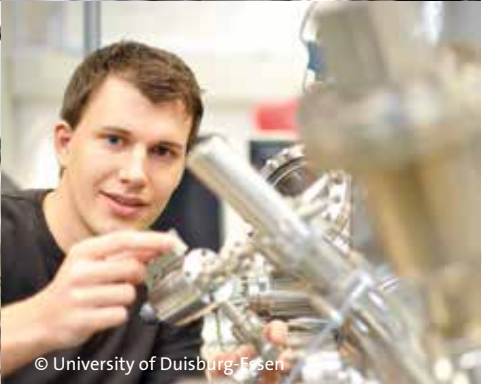
© TU Dortmund University



© TU Dortmund University



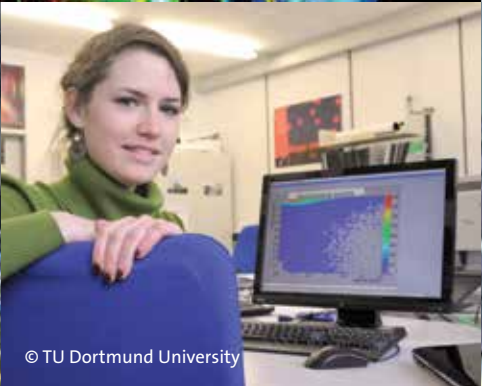
© TU Dortmund University



© University of Duisburg-Essen



© University of Duisburg-Essen



© TU Dortmund University



© University of Duisburg-Essen



© University of Duisburg-Essen

What can we do for you?

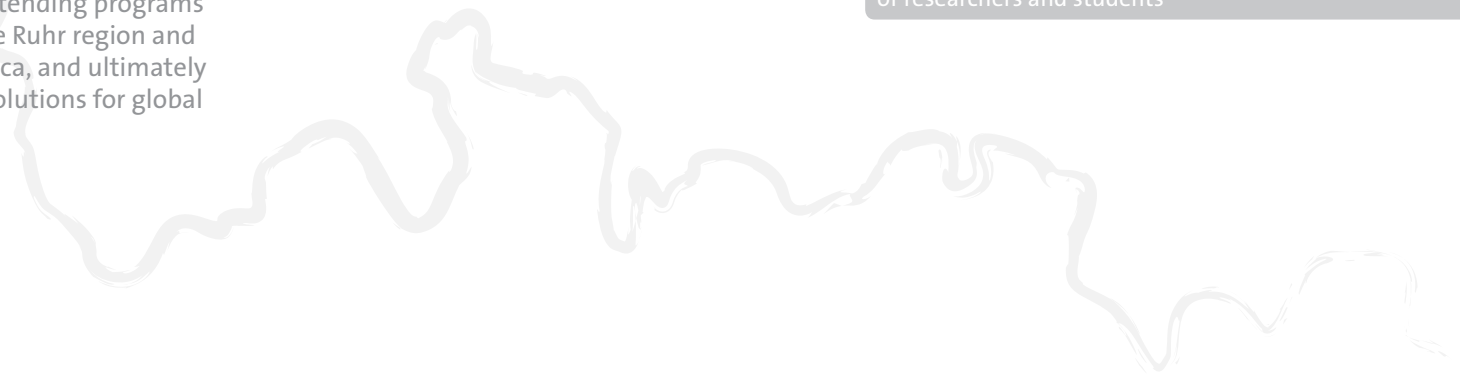
The UA Ruhr New York office promotes innovative transatlantic collaboration in research and education among the three UA Ruhr universities and academic partners in North America.

We leverage our strengths in science and engineering, social sciences, and the humanities, and create unique opportunities for international academic cooperation.

We assist in extending programs throughout the Ruhr region and in North America, and ultimately help develop solutions for global challenges.



- BUILDING NETWORKS**
to promote transatlantic educational and research mobility
- ORGANIZING CONFERENCES**
symposia and workshops for faculty and researchers
- IDENTIFYING FUNDING RESOURCES**
and new programs in science, engineering and the humanities
- PROVIDING CAREER SUPPORT**
for young researchers
- SUPPORTING EXCHANGE**
of researchers and students





Landscape Park Duisburg North

The Ruhr area — the *Ruhrgebiet*. Tradition and future.

Tradition in change.

The Ruhr area, or *Ruhrgebiet*, is the most densely populated region of Germany, with more than 5.1 million people living in more than 50 municipalities. The big four — Duisburg, Essen, Bochum and Dortmund — once were the heart and backbone of Germany's coal and steel industry, a heritage of strength and classic technology.

Today, the entire region stands for smart and innovative answers to the big challenges of technical, economic and social change. This is the place where people from all parts of the world come to work, live and create a better future.

From coal to college and high tech.

The *Ruhrgebiet* has gone through an exemplary transformation from Germany's blue-collar heartland into one of the country's most vibrant regions for science and research. Blast furnaces, gasometers and winding towers are visible reminders of a glorious industrial past, and today mainly serve as venues for cultural events.

The three UA Ruhr universities have been key to the Ruhr area's transformation into a role model for structural change. Interdisciplinary academic work, an excellent network of research institutes, and close ties to large corporations and startups reintroduced the entire Ruhr area as a world-class destination for science, research and culture.

Well connected.

The *Ruhrgebiet* has one of the world's most extensive public transportation networks with more than 900 commuter train, subway, light-rail and bus lines, serving more than 10,000 stops. International long-distance and high-speed trains connect the Ruhr area's cities with other German and European metropolitan regions, and Düsseldorf International Airport serves as a hub to all major destinations, both continental and intercontinental.



ICE high-speed train and autobahn



Decorated tank, Duisburg



Palace Horst, Gelsenkirchen



Landscape Park Duisburg North



Doppelbogenbrücke, Gelsenkirchen

Dortmunder U

The Ruhr area — the *Ruhrgebiet*. Life and landscapes.

Culture.

The 35-mile stretch between Duisburg and Dortmund boasts an unparalleled landscape: The Ruhr area has not only successfully transitioned from heavy industries to science and research, it has also developed into a unique cultural landscape.

International events such as the RuhrTriennale, the Ruhr Piano Festival and the Ruhr Theater Festival feature international as well as regional art and artists — mainstream, classic or experimental. Almost everything can be found in the region's 300-plus museums, venues, parks and theaters.

Nature.

The Ruhr, Emscher and Lippe waterways — once highly polluted and toxic — are now clean rivers with functioning ecosystems. Along the riverbanks, hiking and biking routes connect the different landscapes of the *Ruhrgebiet* and serve as lively getaways for weekend trips or romantic boat tours.

The Landscape Park Duisburg North is an excellent demonstration of the region's philosophy to move on without abandoning the past: Steel structures transform into green landmarks with playgrounds, gardens and entertainment.

Sport.

If there is one thing that stirs up emotions, it is soccer. When the local soccer teams play against one another, streets empty and it suddenly matters whether you are a fan of VfL Bochum or of Borussia Dortmund.

Soccer is the most popular sport in the region, but of course there are hundreds of activities that everyone can pursue, from kick-boxing to yoga, from car racing to chess, in countless clubs for every age group.



Emscher Landscape Park



Emscher canal



Ruhr valley



Ruhr University Bochum.

Opened in 1965 as the first university in the Ruhr area, the Ruhr University Bochum (RUB) is now one of Germany's biggest and most successful research universities.

RUB's Research School, an international college for structured doctoral research, is one of the university's Projects of Excellence. Another project is the Cluster of Excellence RESOLV (Ruhr Explores Solvation) that supports researchers at all stages of their careers and offers a new platform for high value, interdisciplinary education and training for the next generation of scientists.

Interfaculty and interdisciplinary research departments raise the profile of RUB. The outstanding support provided by the Early Career Researchers program and an excellent infrastructure round out the picture.

RUB in numbers

- 41,456 students (14% international)
- 5,616 academic staff
- 1,987 master's degrees per year
- 509 doctoral degrees per year
- 630 foreign doctoral students and international guest researchers
- €414m Budget + €116m third-party funding for research projects

Research facilities and partners

- 5 collaborative research centers
- 8 research units (supported by German Research Foundation – DFG – grants)
- 7 research departments

Research profile

- Materials science
- Protein research
- Interfacial chemistry
- Religious studies
- Plasma science
- Neuroscience
- Subsurface modeling and engineering



TU Dortmund University.

Founded in 1968, TU Dortmund University is dedicated to a unique cross-weaving of natural sciences and engineering as well as social sciences and cultural studies.

With its focus on interdisciplinary cooperation, the university has created a distinctive profile that fosters progressive research and facilitates innovative teaching.

TU Dortmund University is a leading player in the fields of production engineering, electrical engineering and educational research. Its faculty has received numerous prestigious grants and distinctions.

TUDO in numbers

- 31,583 students (12% international)
- 3,394 academic staff
- 1,145 master's degrees
- 277 doctoral degrees
- 350 foreign doctoral students and international guest researchers
- €267m budget + €70m third-party funding for research projects

Research facilities and partners

- Center for Synchrotron Radiation (DELTA)
- Center for Research on Higher Education (zhb)
- Dortmund Research and Development Center for Training, Learning and Professional Development (DoKoLL)
- Social Research Center Dortmund (sfs)
- Leibniz Institute for Analytical Sciences (ISAS)
- Leibniz Research Center for Working Environment and Human Factors at TU Dortmund University (IfADo)

Research profile

- Production and logistics
- Chemical biology and biotechnology
- Modeling and optimization of complex processes and systems
- Educational research

Dortmund Technology Park

- Largest technology park in Germany (#3 in Europe)
- 280 companies
- 8,500 jobs (+ 11,000 indirect jobs)
- €438m turnover (+ €1b indirect turnover)
- 10 incubators for logistics, biomedicine, robotics, IT, micro and nano technology, sensor systems, production technology

University of Duisburg-Essen.

Created in 2003 by the merger of the universities of Duisburg and Essen, the University of Duisburg-Essen (UDE) is the youngest university in the state of North Rhine-Westphalia and one of the ten largest universities in Germany.

In many disciplines, UDE ranks among the top ten of German research universities. Over the past three years, research income has risen 150 percent.

UDE has developed five interdisciplinary research clusters in which its scientists accomplish outstanding work. In the interdisciplinary field of nanoscience, for example, UDE has established itself as a global player with its Center for Nanointegration, CENIDE.

UDE in numbers

- 40,954 students (23% international)
- 5,464 academic staff
- 1,077 master's degrees per year
- 423 doctoral degrees per year
- 495 foreign doctoral students and international guest researchers
- €447m budget + €110m third-party funding for research projects

Research facilities and partners

- CENIDE - Center for Nanointegration Duisburg-Essen
- ELH - Erwin L. Hahn Institute for Magnetic Resonance Imaging
- KHK - Käte Hamburger Kolleg/Centre for Global Cooperation Research
- ZeB - Center for Empirical Educational Research
- ZLV - Centre for Logistics and Traffic
- ZMB - Centre for Medical Biotechnology
- ZWU - Centre for Water and Environmental Research

Research profile

- Nanosciences
- Biomedical sciences
- Empirical research in education
- Urban systems
- Transformation of contemporary societies



Research Network.

The three Ruhr universities are part of an expansive local research network that includes:

- 3 Max Planck Institutes
- 4 Fraunhofer Institutes
- 5 Leibniz Institutes

The universities collaborate closely with these institutes, creating unique interdisciplinary research and educational opportunities.

The **Max Planck Society** (MPG) is an independent, nonprofit research organization. The Max Planck Institutes conduct basic research in the natural sciences as well as in the humanities, thereby complementing research projects at universities.

The **Fraunhofer-Gesellschaft** (FHG) conducts applied research for private and public enterprises, as well as for the general benefit of the public. Fraunhofer Institutes carry out research under contract for industry, the service sector, and public administration and also offer information and service features.

The **Gottfried Wilhelm Leibniz Association** (GWL) addresses scientific issues of importance to society as a whole. The Leibniz Institutes provide infrastructure for science and research and conduct research-based services for the public, policymakers, academia and business.



MAX-PLANCK-GESellschaft



Fraunhofer





UA RUHR

University Alliance Ruhr, Inc.

871 United Nations Plaza
New York, NY 10017, USA

Telephone +1 212-758-3384

Fax +1 212-758-1629

E-Mail info@uaruhr.org

Web www.uaruhr.org